

**TSX SCREEN**

Website : [tsxscreen.com](http://tsxscreen.com)

Phone : +86 166 0025 0766

E-mail : [jane@tsxscreen.com](mailto:jane@tsxscreen.com)



[tsxscreen.com](http://tsxscreen.com)



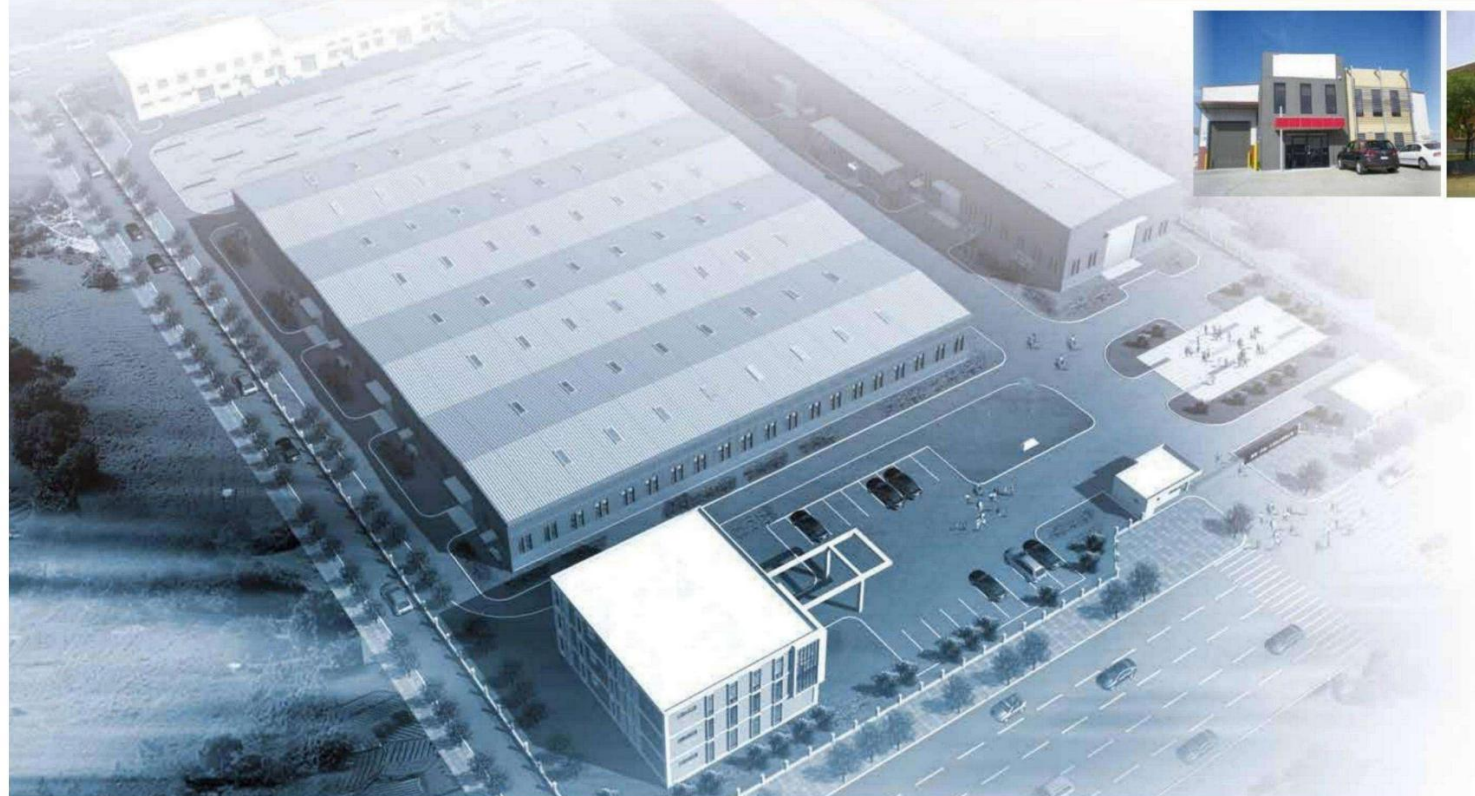
WhatsApp





# 诚信创新 共赢发展

Integrity and Innovation      Win-win Development





## 公司介绍

### company introduction

天津泰寿兴国际贸易有限公司是一家大型矿业设备制造企业。

泰寿兴厂址位于天津市西青经济技术开发区，公司注册资本 800 万美元，实际投资 9000 万元人民币，占地面积接近 30000 平方米，总建筑面积超过 19000 平方米。公司产品面向国际、国内两大市场，为散装物料行业提供 用于脱泥、脱介、脱水、分级所需要的各类振动筛、弛张筛、圆振筛、弧形筛、离心机等洗选设备。并为国内大型煤炭集团提供进口选煤设备的备件加工、主要部件的更换以及提供设备的大修服务。

泰寿兴拥有专业的研发设计团队，经过数年的不懈努力，振动设备的结构设计采用了现代设计方法，把先进的计算机有限元分析法应用在整个泰寿兴产品设计过程中。泰寿兴拥有高端精准的数控等离子切割机、数控龙门钻床、数控龙门铣床、数控卧式加工中心、角钢钻数控生产线、激振梁组对机、三坐标测量仪等十多种主要加工设备，使产品制造的高质量、高精度得到可靠保证。

先进的制造技术使产品具有噪音低、低耗能、效率高、处理量大、使用寿命长、免维护等特点，为广大客户所青睐。

目前泰寿兴公司年生产能力达 380 台以上，生产的各型号振动筛和离心机已经在全国各大煤炭企业使用，产品遍及全国各地。

公司宗旨：诚信创新、共赢发展！



Tianjin Taishouxing International Co., Ltd is a large mining equipment manufacturing enterprise.

TSX is located in the Xiqing Economic and technological Development Zone, Tianjin. The company has registered capital of USD \$ 8,000,000.00 and total China investment over CNY 90,000,000.00. The TSX Tianjin facility covers a land area of almost 30,000m<sup>2</sup> and features a large factory and office facility of over 19,000m<sup>3</sup>. TSX products are sold internationally and within the Chinese domestic market, and comprise vibrating bulk materials process equipments for the coal and minerals industries. Products include a complete range of vibrating screens, flip-flop screens, circular vibrating screens, sieve bends and centrifuges for classifying, de-sliming, drain & rinsing, and sizing, used in coal washing and preparation plants. TSX is a key supplier of products and services to large-scale Chinese domestic mining operations, providing sourcing of imported process equipments, replacement of process equipments, repairs and overhaul services.

TSX Tianjin has a professional R&D design team, the structural design of the vibration equipment adopts the modern design method. After several years of unremitting efforts, the advanced finite element analysis is applied throughout the TSX product design process.

TSX has its own CNC plasma cutting machine, CNC gantry drilling machine, CNC gantry milling machine, horizontal CNC machining center, CNC angle steel drilling production line, exciter beam assembly machine and an advanced three- coordinates quality assurance measuring machine housed in a temperature controlled quality assurance test facility. Advanced manufacturing technology makes the TSX product is characterized by low noise, low power requirements, high efficiency and high capacity, long life, low maintenance, competitive prices.

At present, the annual production capacity of TSX is more than 380 sets, the products are highly regarded in China and are being used by almost all of the major coal companies throughout the country. Within the TSX organization there is a very strong customer focused culture, which internally within the company drives constant improvement and innovation, and which further cultivates a strong, lasting and collaborative relationship between TSX and its clients.







## 卓越的加工能力 Superexcellent machining ability

▼ 初加工车间  
Elementary machining workshop



▼ 精加工车间  
Finish machining workshop



▼ 数控等离子切割机  
CNC plasma cutting machine



▲ 装配车间  
Assembly workshop



▲ 立式加工中心  
Vertical CNC machining center



▲ 卧式加工中心  
Horizontal CNC machining center



## 卓越的加工能力 Superexcellent machining ability

▼ 数控龙门钻床  
CNC gantry drilling machine



▼ 角钢钻数控生产线  
CNC angle steel drilling production line



▼ 激振梁组对机  
Exciter beam assembly machine



▼ 精密数控车床  
Precision CNC lathe



▲ 数控双面铣床  
CNC double face milling machine



▲ 数控龙门铣床  
CNC gantry milling machine



▲ 大型抛丸机  
Large-scale blasting machine



▲ 三坐标测量仪  
Three-coordinates measuring machine





## 香蕉筛系列产品

Banana Screens



产品规格 Production Specification		
单 层Single Deck	双 层 Double Deck	三 层Triple Deck
ABS1848	ABD1848	ABT1848
ABS1861	ABD1861	ABT1861
ABS2448	ABD2448	ABT2448
ABS2461	ABD2461	ABT2461
ABS3061	ABD3061	ABT3061
ABS3073	ABD3073	ABT3073
ABS3085	ABD3085	ABT3085
ABS3661	ABD3661	ABT3661
ABS3673	ABD3673	ABT3673
ABS3685	ABD3685	ABT3685
ABS4361	ABD4361	ABT4361
ABS4373	ABD4373	ABT4373
ABS4385	ABD4385	
ABS4973	ABD4985	
ABS4985		

## 直线筛系列产品

Horizontal Screens



产品规格 Production Specification		
单 层 Single Deck	双 层 Double Deck	三 层 Triple Deck
AHS1848	AHD1848	AHT1848
AHS1861	AHD1861	AHT1861
AHS2448	AHD2448	AHT2448
AHS2461	AHD2461	AHT2461
AHS3061	AHD3061	AHT3061
AHS3073	AHD3073	AHT3073
AHS3085	AHD3085	AHT3085
AHS3661	AHD3661	AHT3661
AHS3673	AHD3673	AHT3673
AHS3685	AHD3685	AHT3685
AHS4361	AHD4361	AHT4361
AHS4373	AHD4373	AHT4373
AHS4385	AHD4385	
AHS4973	AHD4985	
AHS4985		





## 直线型弛张筛系列产品

Horizontal Flip-flop Screens



### 产品规格 Production Specification

#### AHFS 单层直线弛张筛

single deck horizontal flip-flop screens

#### AHFDS 双层直线弛张筛 (一层固定筛面 + 一层弛张筛面)

double deck horizontal flip-flop screens (one static deck + one flip flop deck)

#### AHFDD 双层直线弛张筛 (两层弛张筛面)

double deck horizontal flip-flop screens (two flip flop decks)

#### AHFTD 三层直线弛张筛 (一层固定筛面 + 两层弛张筛面)

triple deck horizontal flip-flop screens (one static deck + two flip flop decks)

#### AHFTT 三层直线弛张筛 (三层弛张筛面)

triple deck horizontal flip-flop screens (three flip flop decks)

1536	1548	1561	1573	1586
------	------	------	------	------

1836	1848	1861	1873	1886
------	------	------	------	------

2136	2148	2161	2173	2186	2193	21100	21120
------	------	------	------	------	------	-------	-------

2436	2448	2461	2473	2486	2493	24100	24120
------	------	------	------	------	------	-------	-------

2736	2748	2761	2773	2786	2793	27100	27120
------	------	------	------	------	------	-------	-------

3036	3048	3061	3073	3086	3093	30100	30120
------	------	------	------	------	------	-------	-------

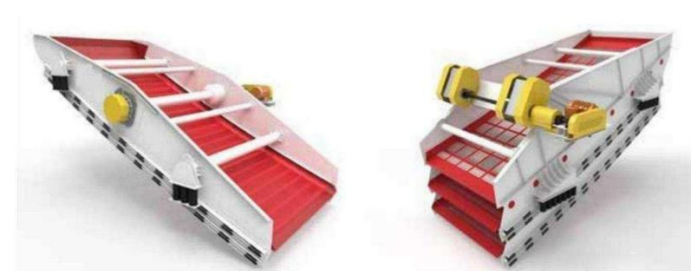
3336	3348	3361	3373	3386	3393	33100	33120
------	------	------	------	------	------	-------	-------

3636	3648	3661	3673	3686	3693	36100	36120
------	------	------	------	------	------	-------	-------

4373	4386	4393	43100	43120
------	------	------	-------	-------

## 香蕉型弛张筛系列产品

Banana Flip-flop Screens



### 产品规格 Production Specification

#### ABFS 单层香蕉弛张筛

single deck banana flip-flop screens

#### ABFDS 双层香蕉弛张筛 (一层固定筛面 + 一层弛张筛面)

double deck banana flip-flop screens (one static deck + one flip flop deck)

#### ABFDD 双层香蕉弛张筛 (两层弛张筛面)

double deck bananal flip-flop screens (two flip flop decks)

#### ABFTD 三层香蕉弛张筛 (一层固定筛面 + 两层弛张筛面)

triple deck banana flip-flop screens (one static deck + two flip flop decks)

#### ABFTT 三层香蕉弛张筛 (三层弛张筛面)

triple deck banana flip-flop screens (three flip flop decks)

1536	1548	1561	1573	1586
------	------	------	------	------

1836	1848	1861	1873	1886
------	------	------	------	------

2136	2148	2161	2173	2186	2193	21100	21120
------	------	------	------	------	------	-------	-------

2436	2448	2461	2473	2486	2493	24100	24120
------	------	------	------	------	------	-------	-------

2736	2748	2761	2773	2786	2793	27100	27120
------	------	------	------	------	------	-------	-------

3036	3048	3061	3073	3086	3093	30100	30120
------	------	------	------	------	------	-------	-------

3336	3348	3361	3373	3386	3393	33100	33120
------	------	------	------	------	------	-------	-------

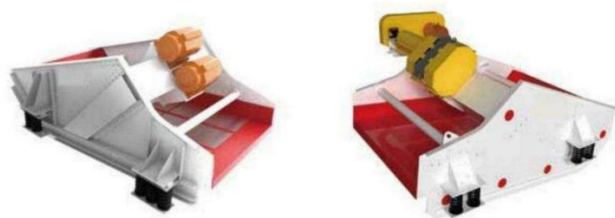
3636	3648	3661	3673	3686	3693	36100	36120
------	------	------	------	------	------	-------	-------

4373	4386	4393	43100	43120
------	------	------	-------	-------



## 高频筛系列产品

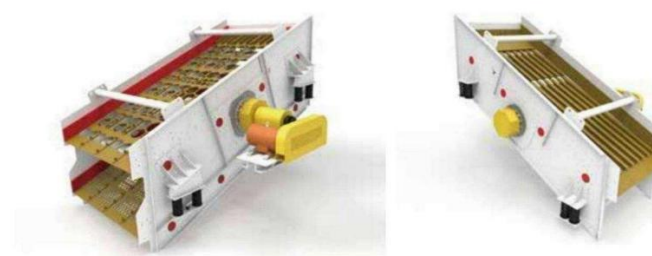
High Frequency Screens



产品规格 Production Specification	
	AHF1236
	AHF1530
	AHF1536
	AHF1836
	AHF2136
	AHF2148
	AHF2436
	AHF2448

## 圆振筛系列产品

Circular Motion Vibrating Screens



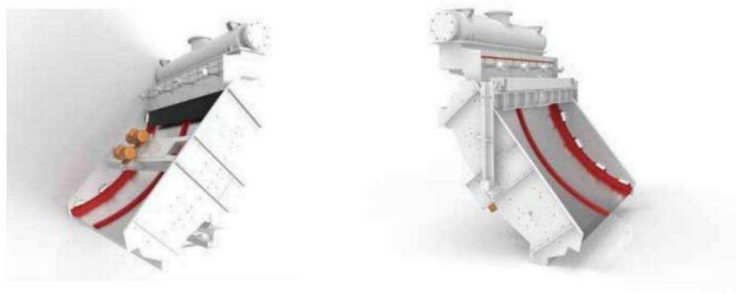
产品规格 Production Specification		
单层 Single Deck	双层 Double Deck	三层 Triple Deck
ACS1536	ACD1840	ACT1840
ACS1840	ACD1848	ACT1848
ACS1848	ACD2448	ACT2448
ACS2448	ACD3048	ACT3048
ACS3048	ACD1861	ACT1861
ACS1861	ACD2461	ACT2461
ACS2461	ACD3061	ACT3061
ACS3061	ACD3661	ACT3661
ACS3661	ACD4361	ACT4361
ACS4361	ACD3073	ACT3073
ACS3073	ACD3673	ACT3673
ACS3673	ACD4373	ACT4373
ACS4373		





## 弧形筛系列产品

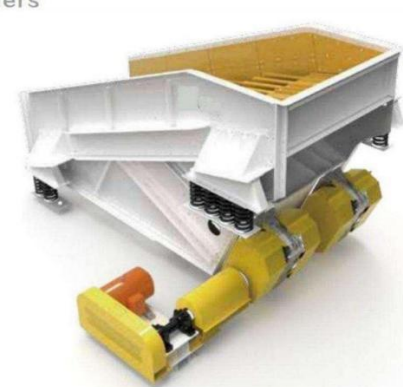
Sieve Bends



产品规格 Production Specification		
AVR 座式振动弧形筛 foot mounted vibrating sieve bends	0945	2260
	0960	2445
	1245	2460
	1260	2845
	1545	2860
AXR 座式非振动弧形筛 foot mounted static sieve bends	1560	3045
	1645	3060
	1660	3245
AGVR 悬挂式振动弧形筛 suspension vibrating sieve bends	1845	3260
	1860	3445
	2045	3460
AGXR 悬挂式非振动弧形筛 suspension static sieve bends	2060	3645
	2145	3660
	2160	3945
	2245	3960

## 棒条给料机系列产品

Grizzly Feeders

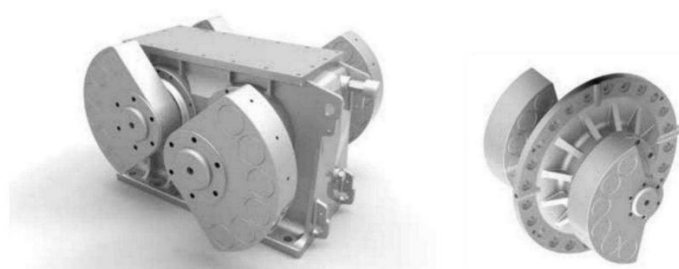


产品规格 Production Specification
ARS1536
ARS1848
ARS1861
ARS2448
ARS2461
ARS3061



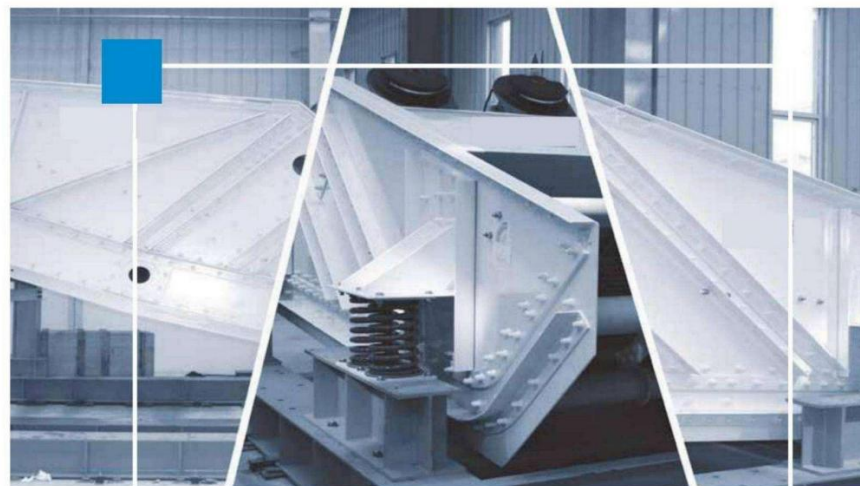
## 激振器系列产品

Exciters



产品规格 Production Specification

	A系列Series	B系列Series	L系列Series	CD系列Series	BE系列Series	U系列Series		A系列Series
ZDQ 系列 Series	ZDQ30A	ZDQ30B	ZDQ15L	ZDQCD01	ZDQ10BE	ZDQ30U	RDQ 系列 Series	RDQ30A
	ZDQ30AF	ZDQ20B	ZDQ08H	ZDQCD02	ZDQ20BE	ZDQ20U		RDQ 30AF
	ZDQ30AS	ZDQ20BS	ZDQ08L					RDQ 30AFC
	ZDQ30AT	ZDQ10B	ZDQ06LST					RDQ 30AG
	ZDQ30AH	ZDQ10BF	ZDQ06L					RDQ 20A
	ZDQ20A	ZDQ10BS						RDQ 20AF
	ZDQ20AF							RDQ 20AFC
	ZDQ20AS							RDQ 20AG
	ZDQ20AT							RDQ 10A
	ZDQ20AH							RDQ 10AF
	ZDQ10A							RDQ 10AFC
	ZDQ10AF							RDQ10AFC1
	ZDQ10AS							RDQ 10AG
	ZDQ10AT							
	ZDQ09A							
	ZDQ09AF							



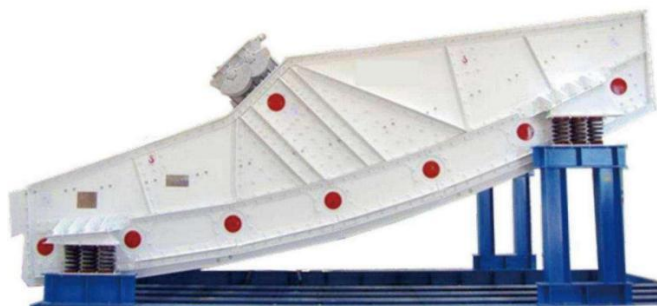
## 设备特点及优势

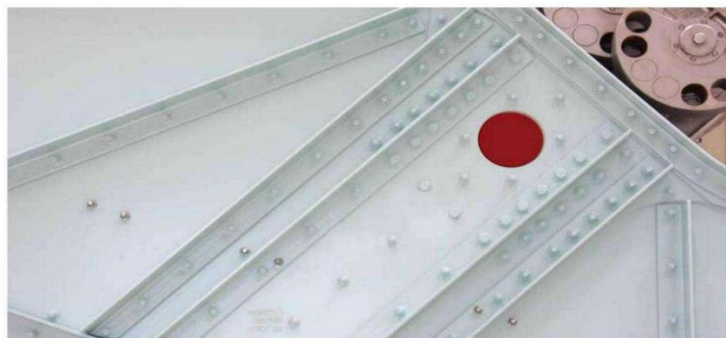
### The character and advantage of product

筛体结构:采用有限元分析法,使设计结构合理,消除应力集中,避免共振,提高筛机可靠性,运行平稳。

Structure: Finite Element Method is applied in the whole of structural design of TSX products to realize logical structure, eliminate stress, avoid resonance, improve the reliability of screen.





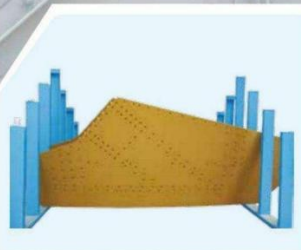


所有部件均经喷砂喷漆防腐处理，所有配合面为防水密封处理，适应现场恶劣环境。

筛体侧板为无缝设计，采用进口 HUCK 螺栓液压拉紧装配，保证整体结构无残余应力。

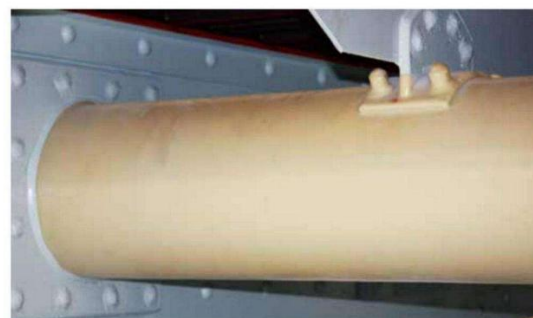
All components were processed by blasting and painting and all assembly surfaces were processed by waterproof sealing, which realize the well operation of screen in worse field.

Weldless side plate assembled by HUCK bolts to ensure zero stress on the structure.



横梁采用圆形特制管材设计，强度高、重量轻。横梁表面采用独有的聚氨酯喷涂工艺处理，耐冲刷耐腐蚀。

Cross beam was made by a special circle pipe to realize strong strength and light weight. The special polyurethane painting on the surface of cross beam to realize the erosion resistance and abrasion resistance.



激振器梁采用箱型设计，强度高、重量轻。激振器梁配合面在组装前均采用数控机床进行加工，有效地保证筛机整体装配质量。

Box exciter beam has the advantages of strong strength and light weight. A further machining processing on the assembly surface of exciter beam by CNC machine to ensure a high assembly quality of screen.

泰寿兴高效激振器，采用 SKF 专用振动轴承，激振力大，噪音低，使用寿命长。TSX high efficiency exciter mounted on the specialized SKF vibrating bearing with the advantage of strong exciting power, lower noise and longer working life.



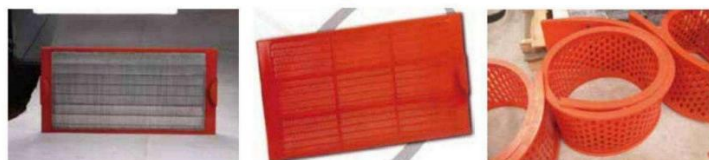




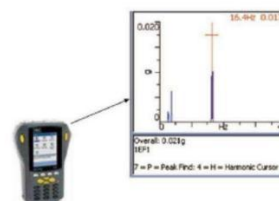
驱动系统采用 SKF 轴承及密封，驱动力强，结构牢固，运行可靠，寿命长。  
SKF bearings and seals used for drive system realizes strong drive power, strong structure, reliable operation and long working life.



筛机可根据客户的特殊要求专门设计，并提供现场组装。  
Screen can be designed and on site assembled as the special requirements of client.



采用国内领先水平的筛板，开孔率高、筛缝不易堵塞，脱介、脱水效果好，寿命长。  
High opening deck with resistance to block can realize the good D&R result and long working life.

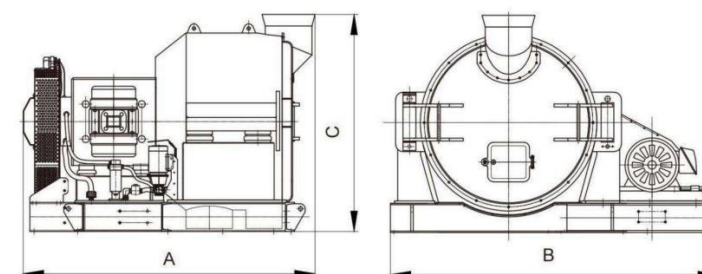


每台筛机出厂前使用专用仪器进行各项静、动态性能测试，确保产品合格。  
In order to ensure the qualified product, all screens must pass the static and dynamic tests by special instruments before delivery.



# WSL主要技术参数

## Main technology parameters



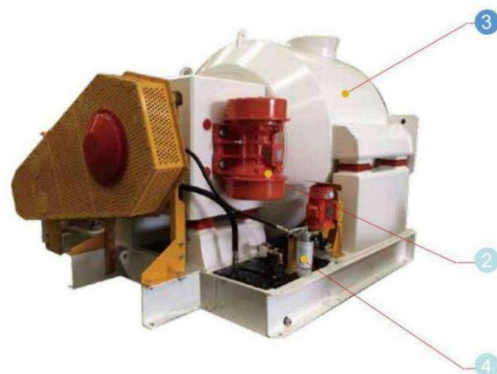
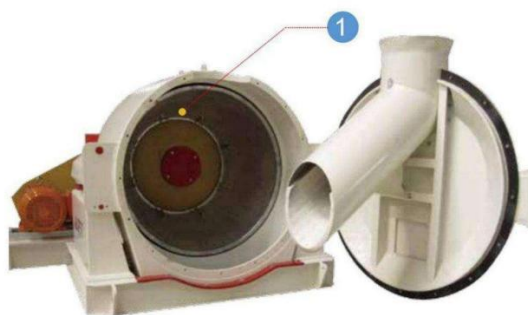
型号 Model	处理能力 Capacity (t/h)	入料粒度 Feeding Size (mm)	产品水分 Surface Moisture (% <)	筛篮直径 Diameter of Basket (mm)	筛缝 Basket Aperture (mm)	驱动电机 Drive Motor (kw)	激振电机 Vibrating Motor (kw)	油泵电机 Pump Motor (kw)	外形尺寸 Overall Dimension A×B×C (mm)	重量 Weight (t)
WSL1100	120-150	0-50	6-9	1100	0.2-1.5	30	3.0×2	0.75	2507X2817X1864	6.5
WSL1200	150-175	0-50	6-9	1200	0.2-1.5	37	3.0×2	0.75	2507X2817X1864	6.7
WSL1300	180-210	0-50	6-9	1300	0.2-1.5	37	3.0×2	0.75	2722×2944×2011	8.3
WSL1400	210-250	0-50	6-9	1400	0.2-1.5	45	3.0×2	0.75	2722×2944×2011	8.6
WSL1500	300-350	0-50	6-9	1500	0.2-1.5	55	5.8×2	0.75	3208×3135×2231	10.8
WSL1650	350-400	0-50	6-9	1650	0.2-1.5	75	5.8×2	0.75	3208×3135×2231	11.5





## WSL设备特点

Equipment characteristics



### 旋转部分:

采用进口SKF专用轴承, 承载大, 噪声低。筛篮倾角及端面经优化设计, 便于出料, 拆装方便。旋转连接面均采用专业双重密封系统设计, 密封效果好, 使用寿命长。

### Rotating Mechanism

The WSL series of centrifuges utilize only the highest quality import SKF bearings with high load capacity and low noise characteristics. Screen basket angles have been developed to maximize dewatering performance while providing high throughputs, and are easily changed.

Rotating junctions are sealed using a double oil seal/labyrinth oil seal system to ensure no oil leaks or contamination of oil, ensuring long service life.

### 振动部分:

采用立式安装的两台振动电机作为激振源, 振动平稳, 振幅稳定, 具有结构简单、调整方便、维护时间短、维修量少、无漏油、布局合理、性能可靠的特点。

### Vibrating Section

The two vibrating motors are reliable and easily serviced. The units utilize greased and sealed bearings preventing oil leakage and reliable trouble free operation.

### 机体部分:

箱式设计, 所有易磨损部位, 均镶嵌有进口高强度耐磨瓷砖, 数控机床精密加工各装配面, 充分保证设备安装精度和同轴度。所有焊接部位均达到一级探伤检验标准, 并进行退火处理以消除应力。整体结构强度高、稳定性好、结构紧凑、安全系数大。

### Machine Section

High strength alumina tiles lined for all wearing surfaces of centrifuge of box-design. All assembly surfaces are processed by CNC machines to ensure high precision and axiality.

All welded parts reach to Level 1 standard by NDT tested prior to annealing treatment. The centrifuges are high strength, greater stability, compact size, high safety factor.

### 润滑系统:

采用稀油集中压力循环润滑系统。该系统具有润滑、冷却、油质净化等多项功能, 润滑油少, 噪声低, 维修量小, 只要定期加油, 换油即可。迷宫润滑采用进口自动注油器, 自动加油, 免维护型。

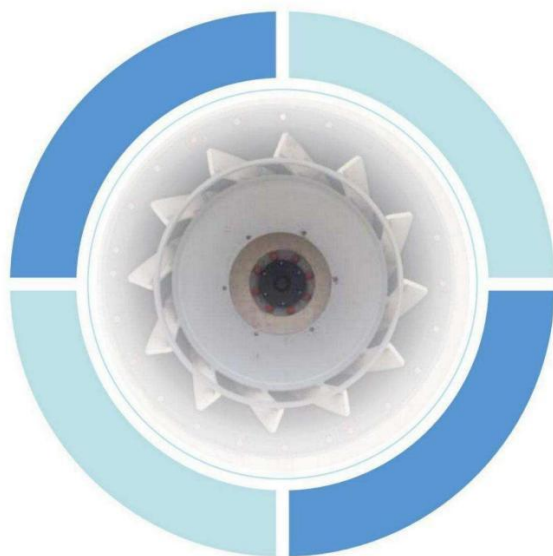
### Lubrication System

The forced circulation lubrication system is used for lubrication, cooling and cleansing. Maintenance of the oil feed system is simple.



## WSL筛篮组件

Screen basket subassembly



泰寿兴离心机采用国内领先水平的筛篮，具有开孔率大、筛缝不易堵塞、脱水效率高、强度大、不易变形、耐磨损、使用寿命长，拆装方便等优点。

Basket of TSX centrifuge has occupied domestic leading level, high percentage of opening, resistance to block, high dewatering efficiency, high strength against deformation, high wear resistance, longer life, convenient for disassembly and assembly.

筛篮 Basket

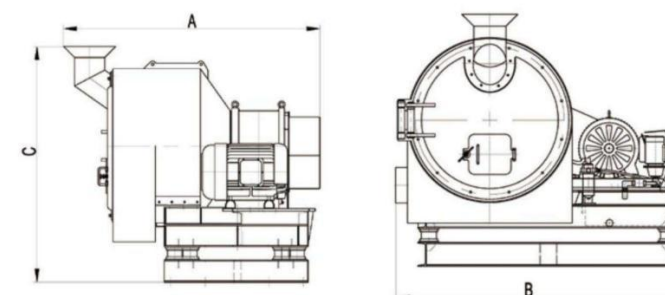


筛篮托架 Basket Carrier



**ML 系列卧式刮刀卸料离心机**  
Series Horizontal Scraper Centrifuges

**ML主要技术参数**  
Main technology parameters



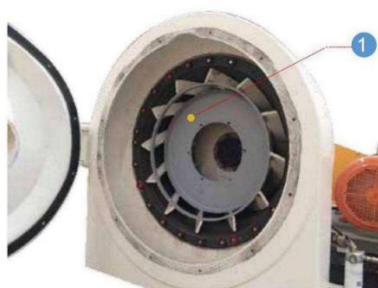
型号 Model	处理能力 Capacity ( t/h )	入料粒度 Feeding Size ( mm )	产品水分 Surface Moisture ( % < )	筛篮直径 Diameter of Basket ( mm )	筛缝 Basket Aperture ( mm )	驱动电机 Drive Motor ( kw )	油泵电机 Pump Motor ( kw )	外形尺寸 Overall Dimension A×B×C(mm)	重量 Weight ( t )
ML900	40-45	0.15-0.6	12~24	900	0.2-0.5	55	0.75	2329X2459X2098	4.2
	50-60	0.15-1.0							
	60-70	0.5-3.0							
ML1000	50-55	0.15-0.6	12~24	1000	0.2-0.5	75	0.75	2329X2459X2098	4.7
	60-70	0.15-1.0							
	75-85	0.5-3.0							
ML1200	60-75	0.15-0.6	12~24	1200	0.2-0.5	75	0.75	2348X2634X2237	5.3
	70-85	0.15-1.0							
	85-110	0.5-3.0							
ML1300	60-75	0.15-0.6	12~24	1300	0.2-0.5	90	0.75	2406X2836X2308	5.800
	70-85	0.15-1.0							
	85-110	0.5-3.0							





## ML设备特点

Equipment characteristics



### 旋转部分:

结构优化设计, 采用高精度、高强度差速器, 进口SKF专用轴承, 超长使用寿命, 噪声低; 刮刀采用新型结构, 旋转平稳, 布料均匀, 有效降低处理大量进料时的负荷波动; 整机传动部件少, 运行可靠, 低维护、低维修成本。  
筛蓝转速高, 煤泥回收率高, 产品脱水效果好。  
所有转动部件均封闭在保护罩内部, 操作简单、安全可靠。

### Rotating Mechanism

Centrifuges of optimization design incorporate oversized high precision and intensity differential mechanism, import SKF bearings for long trouble free operation, low noise. New structure scraper for smooth operation. The machine design also facilitates even basket loading reducing dynamic vibration. Less moving parts in the TSX ML series centrifuge design means efficient, reliable operation, and lower down time and maintenance costs. High rotate speed, slime recovery and drainage efficiency. All moving parts are enclosed in a protective cover, easy to operate reliably.

### 振动部分:

专业配置力矩过载保护装置  
专业配置供油系统异常保护装置

### Vibrating Section

The ML centrifuge incorporates a professional torque overload protection device, and oil supply system protection device.

### 机体部分:

离心机壳体、刮刀、入料管等所有易磨损部位, 均镶嵌有进口高强度耐磨瓷砖  
专业入料口、排料口设计, 保证物料顺畅通过, 对物料变化适应性强, 延长使用寿命。

### Machine Section

The ML Centrifuge housing, scraper, feed chute are all covered with high density Alumina wear tiles to reduce wear and extend machine service life

### 润滑系统:

专业配置独立润滑冷却系统, 具有润滑、冷却、油质净化等多项功能, 并配置有油路保护功能, 确保润滑系统安全可靠, 维护量少。

### Lubrication System

An independent lubrication system is used for lubrication, cooling and cleansing. The system is equipped with oil circuit protection function to ensure operation safety of system with less maintenance.



## ML筛篮组件

Screen basket subassembly

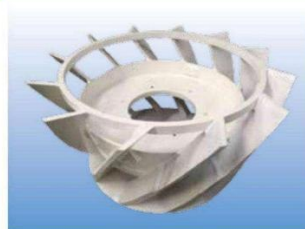
筛篮 Basket



筛篮托架 Basket Carrier



筛框 Cage



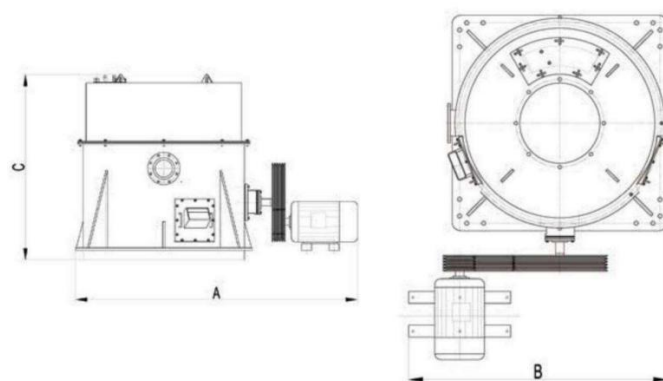
刮刀 Scraper

## AML 系列立式刮刀卸料离心机 Series Vertical Scraper Centrifuges





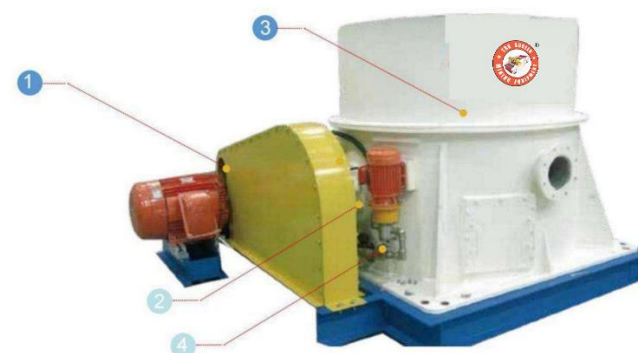
## AML系列立式刮刀卸料离心机主要技术参数 Main technology parameters



型号 Model	处理能力 Capacity (t/h)	入料粒度 Feeding Size (mm)	产品水分 Surface Moisture (% <)	筛篮直径 Diameter of Basket (mm)	筛缝 Basket Aperture (mm)	驱动电机 Drive Motor (kw)	油泵电机 Pump Motor (kw)	外形尺寸 Overall Dimension A×B×C(mm)	重量 Weight (t)
AML1000	40-60	0-2	16-24	1000	0.2-0.5	55	0.75	2919×2916×1915	5
AML1200	50-70	0-2	16-24	1200	0.2-0.5	55	0.75	2919×2916×1915	5.25

## AML设备特点

Equipment characteristics







### 1 旋转部分:

结构优化设计, 采用高精度、高强度差速器结构, 进口SKF专用轴承, 超长使用寿命, 噪声低; 刮刀采用新型结构, 旋转平稳, 布料均匀, 有效降低处理大量进料时的负荷波动; 整机传动部件少, 运行可靠, 低维护、低维修成本。筛篮转速高, 煤泥回收率高, 产品脱水效果好。所有转动部件均封闭在保护罩内部, 操作简单、安全可靠。

### Rotating Mechanism

Centrifuges of optimization design incorporate oversized high precision and intensity differential mechanism, import SKF bearings for long trouble free operation, low noise. New structure scraper for smooth operation. The machine design also facilitates even basket loading reducing dynamic vibration. Less moving parts in the TSX AML series centrifuge design means efficient, reliable operation, and lower down time and maintenance costs. High rotate speed, slime recovery and drainage efficiency. All moving parts are enclosed in a protective cover, easy to operate reliably.

### 2 振动部分:

专业配置供油系统异常保护装置

### Vibrating Section

The AML centrifuge incorporates oil supply system protection device.

### 3 机体部分:

离心机壳体、刮刀等所有易磨损部位, 均镶嵌有进口高强度耐磨瓷砖。专业入料口、排料口设计, 保证物料顺利通过, 对物料变化适应性强, 延长使用寿命。

### Machine Section

The AML Centrifuge housing, scraper are all covered with high density Alumina wear tiles to reduce wear and extend machine service life

### 4 润滑系统:

专业配置独立润滑系统, 具有润滑、油质净化等多项功能, 并配置有油路保护功能, 确保润滑系统安全可靠, 维护量少。

### Lubrication System

An independent lubrication system is used for lubrication and cleansing. The system is equipped with oil circuit protection function to ensure operation safety of system with less maintenance.

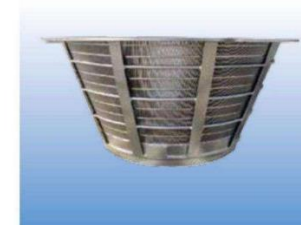
## AML筛篮组件

### Screen basket subassembly

分料盘 Feeding divider



筛篮 Basket



轮辐盘底座 Spoke Piece Cone

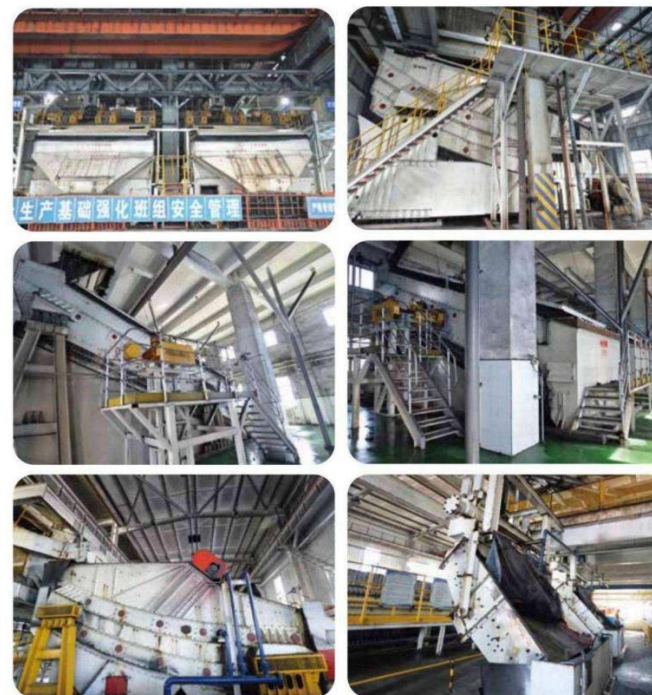
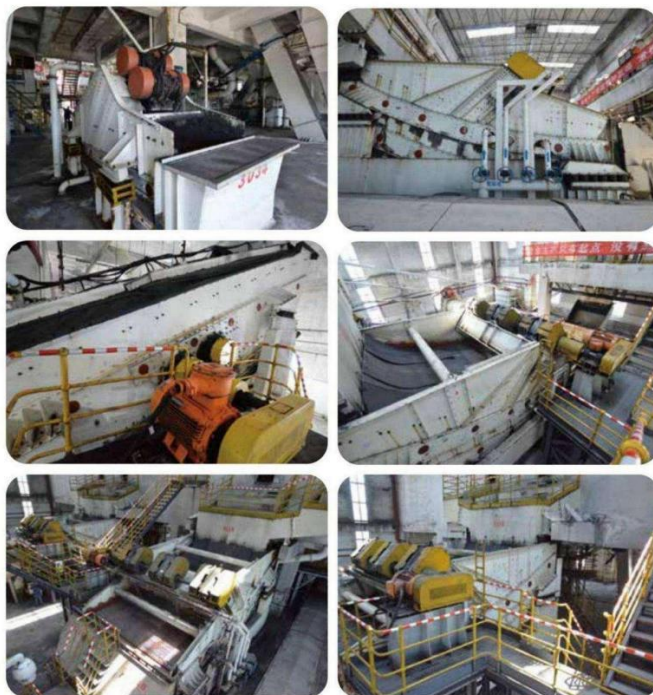


刮刀 Scraper



## 使用现场

Application on site





## 主要用户 Sales List

产品 Products	主要用户名称 Main Client Name
振动筛 vibrating screens	神华集团 Shenhua Group
	中煤能源集团 China Coal Energy Group
	大同煤矿集团 Datong Coalmines Group
	神华宁煤集团 Shenhua Ningxia Coal Industrial Group
	陕西煤业集团 Shanxi Coal Industrial Group
	山西焦煤集团 Shanxi Coking Coal Group
	阳泉煤业集团 Yangquan Coal Industrial Group
	潞安矿业集团 Luan Mining Group
	华晋焦煤集团 Huajin Coking Coal Group
	河南煤化集团 Henan Coal Chemical Industry Group
	重投能源集团 Chongqing Energy Group
	伊泰集团 Yitai Group, Yonghui Coking Coal Group
	兖矿集团 Yankuang Group
	开滦集团 Kailuan Group
	淮北矿业集团 huabei Mining Group
	河北冀中能源集团 Hebei Jizhong Energy Group
	Sedgman Pty Limited
	BMA – South Waker Creek
	Glencore Coal
	Rio Tinto Group
离心机 centrifuges	神华集团 Shenhua Group
	中煤能源集团 China Coal Energy Group
	神华宁煤集团 Shenhua Ningxia Coal Industrial Group
	山西焦煤集团 Shanxi Coking Coal Group
	阳泉煤业集团 Yangquan Coal Industrial Group
	华晋焦煤集团 Huajin Coking Coal Group
	河南煤化集团 Henan Coal Chemical Industry Group
	伊泰集团 Yitai Group, Yonghui Coking Coal Group
	兖矿集团 Yankuang Group
	开滦集团 Kailuan Group
	Glencore – Bulga Coal
	Glencore – Mt Owen
	Peabody – Wilpiong



## 使用现场 Application on site

